

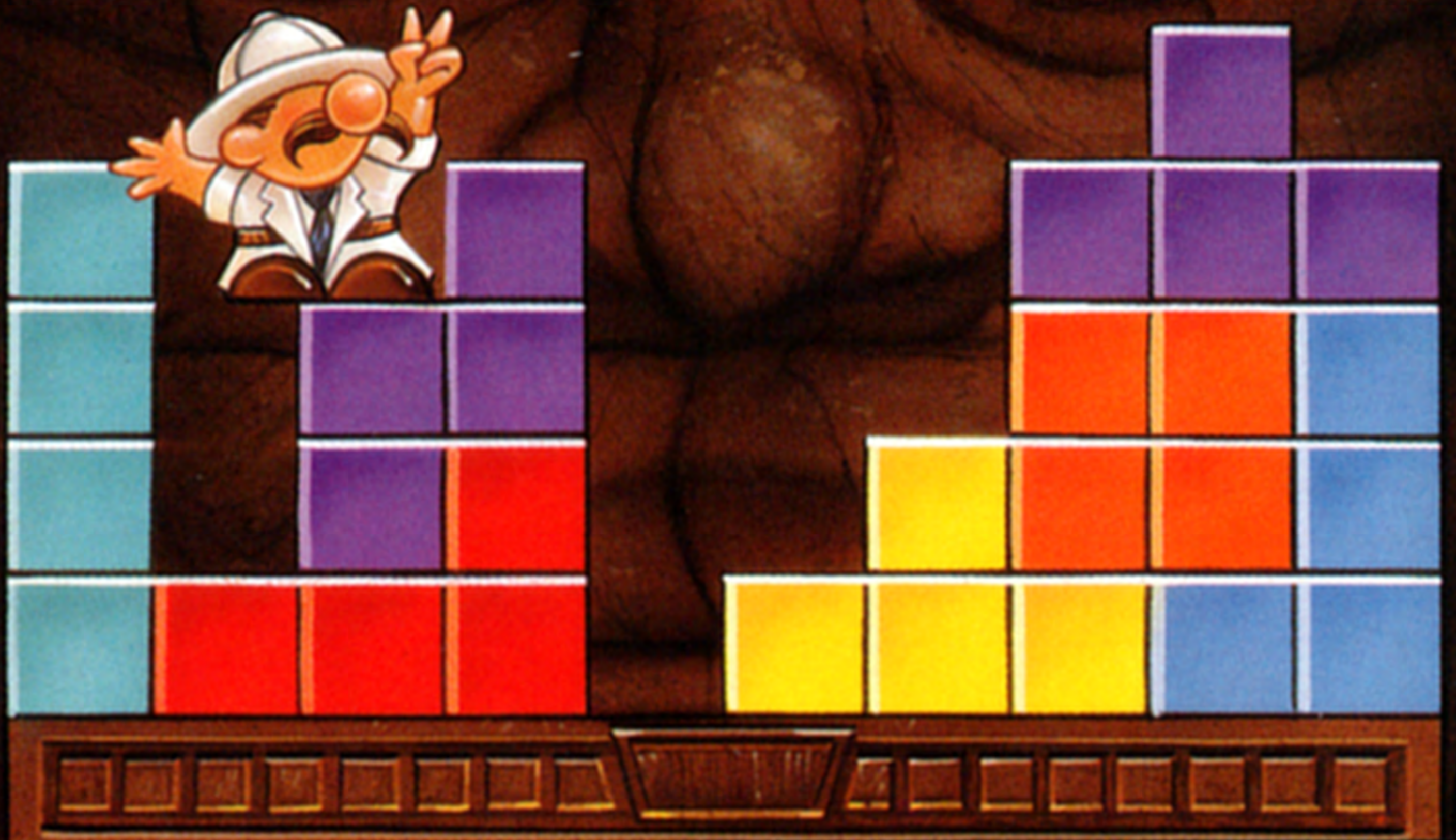
INCLUDES THE CLASSIC TETRIS VERSION AND MUCH MORE!



NTSC U/C

PlayStation

TETRIS PLUS™



EVERYONE



CONTENT RATED BY
ESRB

SLUS-00338
50005

JALECO™



- The PlayStation disc is intended for use exclusively with the PlayStation™.
- Do not bend it, crush it, or submerge it in liquids.
- Do not leave it in direct sunlight or near a radiator or other source of heat.
- Be sure to take an occasional recess during extended play, to rest yourself and the PlayStation compact disc.
- Keep your PlayStation compact disc clean. Always hold the edges and keep it in its case when not in use. Clean with a lint-free, soft dry cloth-wiping in straight lines from center to edge. Never use solvents or abrasive cleaners.

WARNING TO OWNERS OF PROJECTION TELEVISIONS: STILL PICTURES OR IMAGES MAY CAUSE PERMANENT PICTURE-TUBE DAMAGE OR MARK THE PHOSPHOR OF THE CRT. AVOID REPEATED OR EXTENDED USE OF VIDEO GAMES ON LARGE-SCREEN PROJECTION TELEVISIONS.

WARNING: READ BEFORE USING YOUR PLAYSTATION GAME CONSOLE.

A very small percentage of individuals may experience epileptic seizures when exposed to certain light patterns or flashing lights. Exposure to certain patterns or backgrounds on a television screen or while playing video games may induce an epileptic seizure in these individuals. Certain conditions may induce previously undetected epileptic symptoms even in persons who have no history of prior seizures or epilepsy. If you, or anyone in your family, has an epileptic condition, consult your physician prior to playing. If you experience any of the following symptoms while playing a video game- dizziness, altered vision, eye or muscle twitches, loss of awareness, disorientation, any involuntary movement, or convulsions- IMMEDIATELY discontinue use and consult your physician before resuming play.

This product has been rated by the Entertainment Software Ratings Board. For information about the ESRB rating, or to comment about the appropriateness of the rating, please contact the ESRB at 1 (800) 771-3772.

TABLE OF CONTENTS

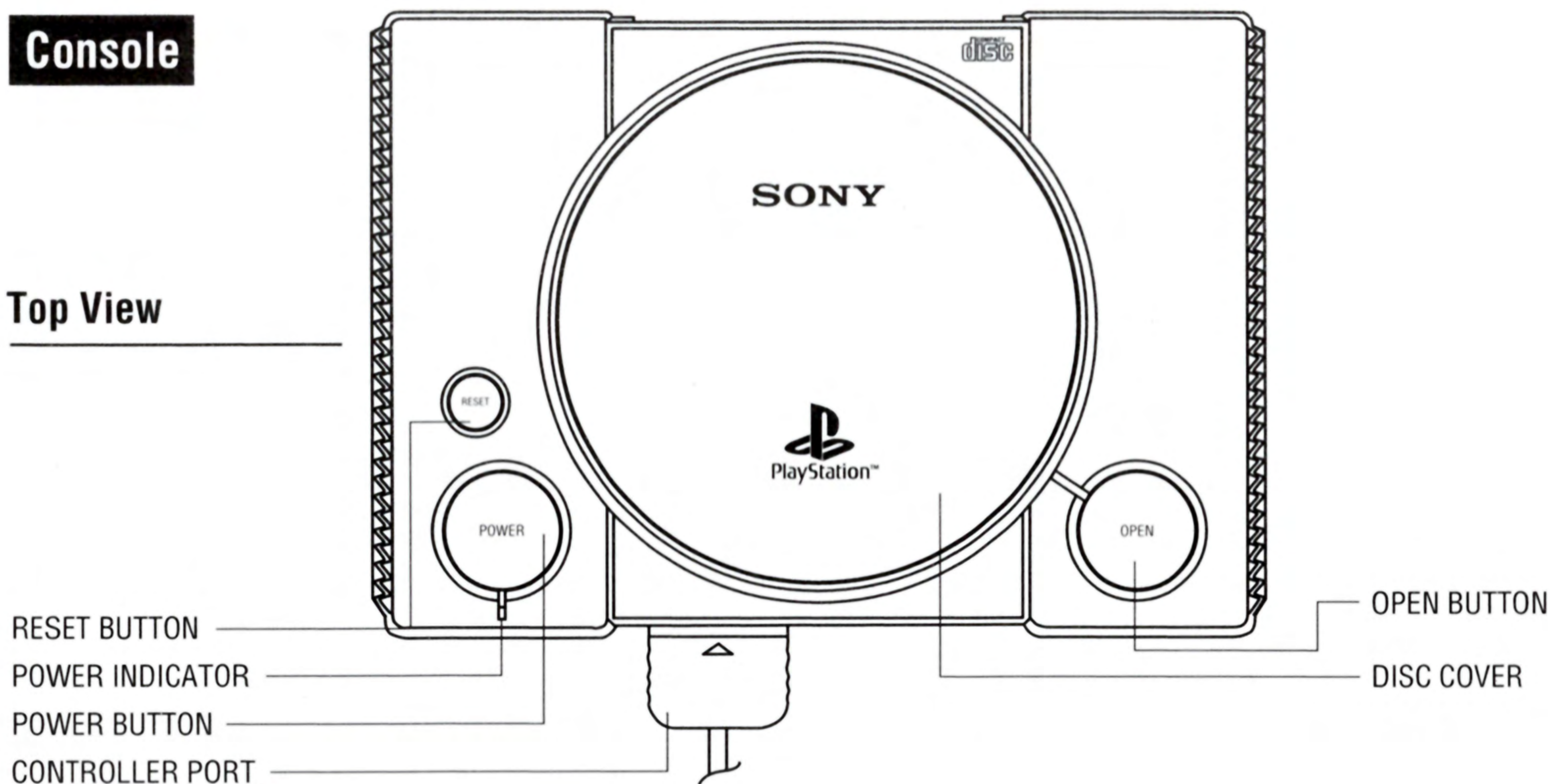
Setting Up Your Game	1
It's Tetris Plus a Whole Lot More!	4
Edit Mode	8
Options	9
Tetris Plus Credits	10

SETTING UP YOUR GAME

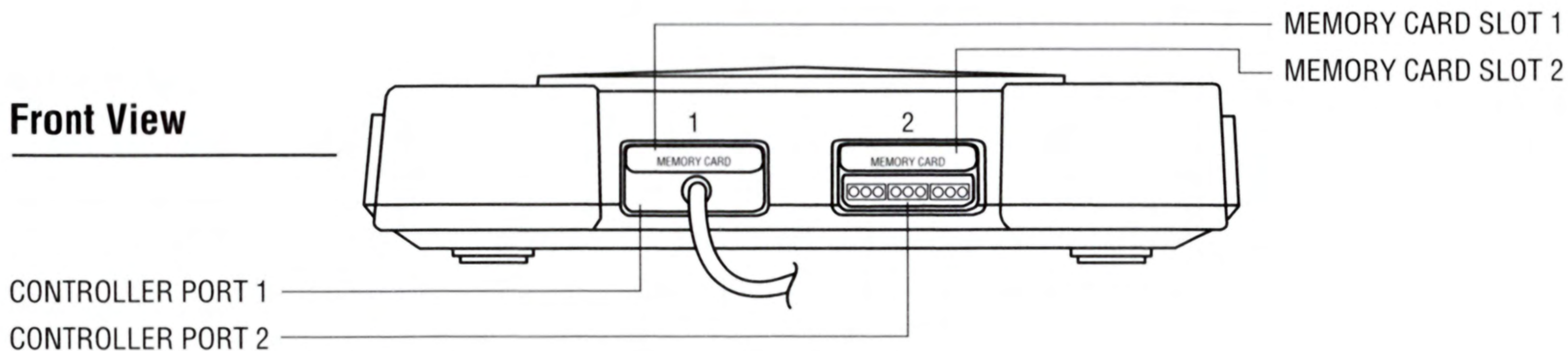
Set up your PlayStation™ game console according to the directions in its Instruction Manual. Make sure the power is off before inserting or removing a compact disc. Insert the Tetris Plus disc and close the CD door. Insert game controllers and turn on the PlayStation game console. Follow the on-screen instructions to start a game.

Console

Top View

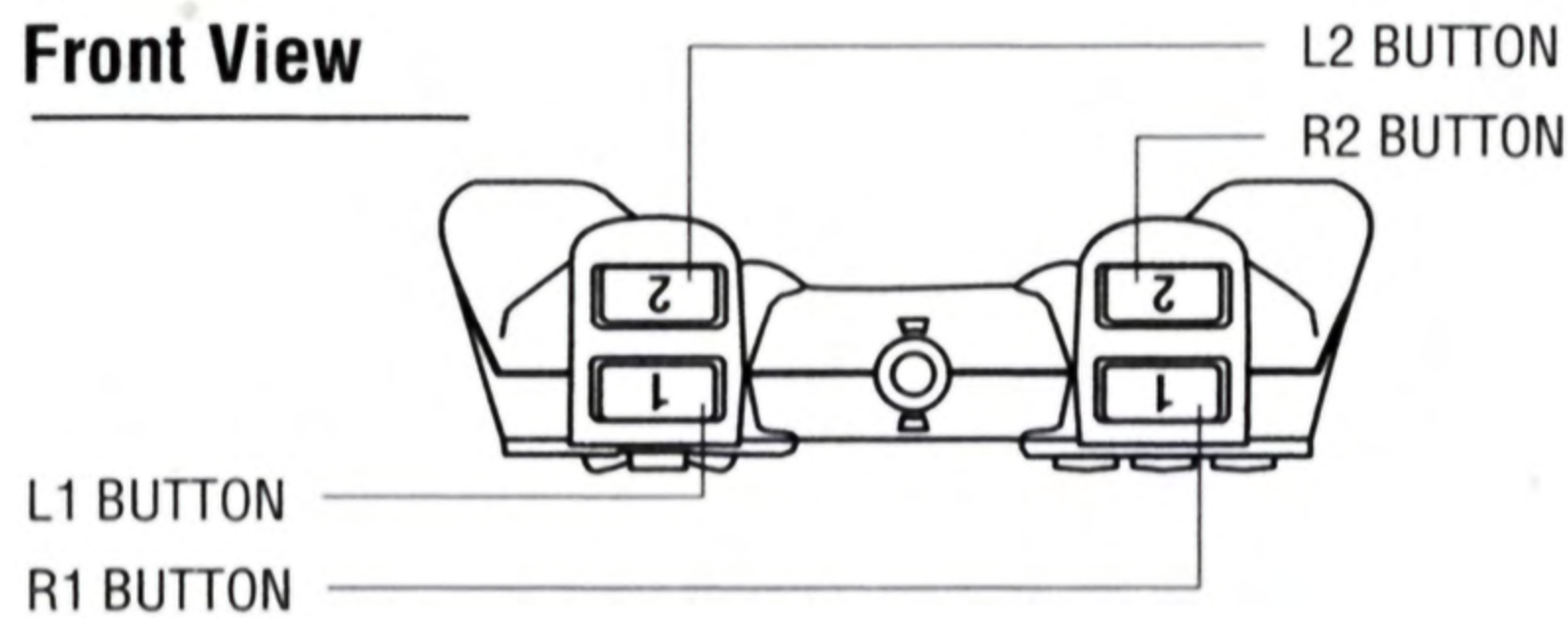


Front View

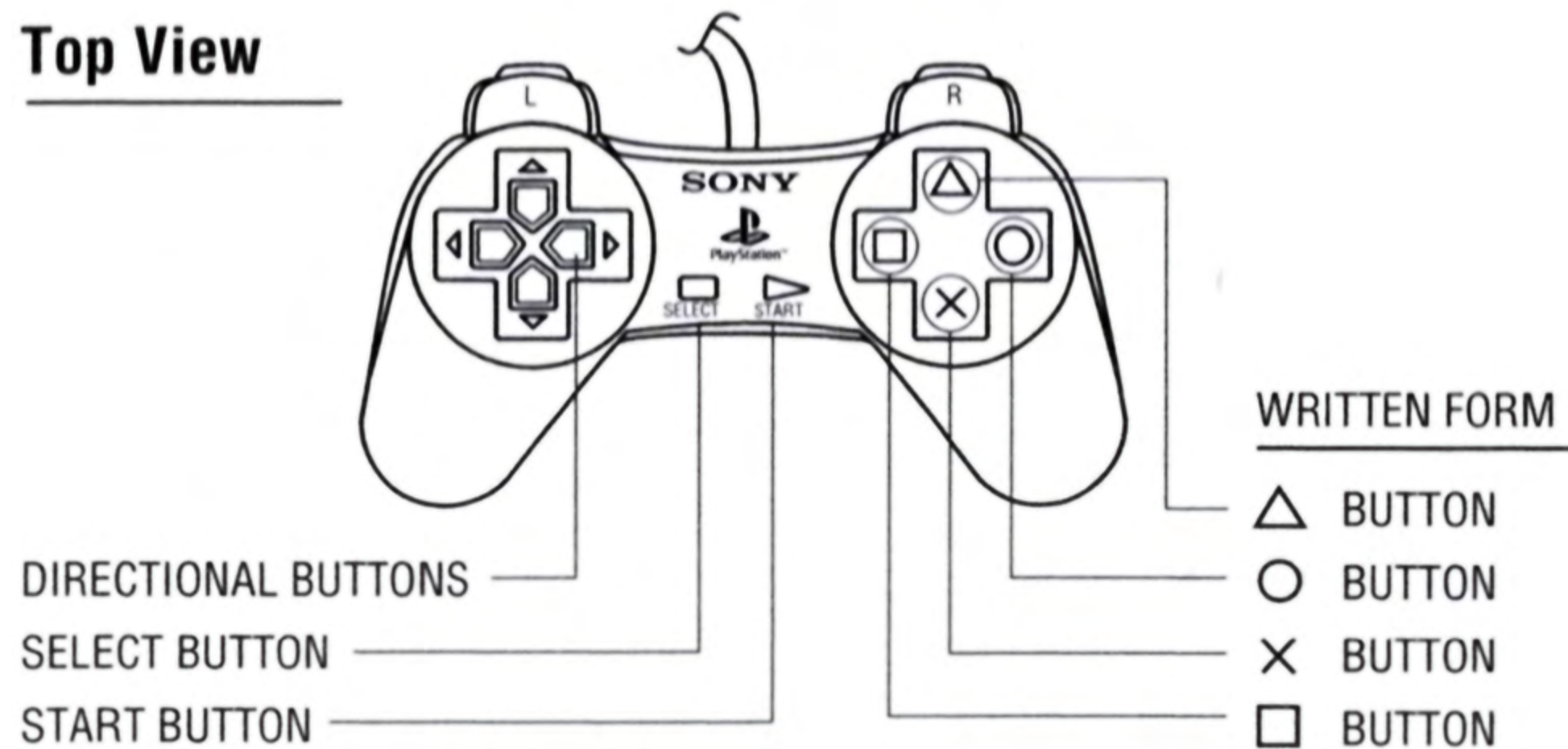


Controller

Front View



Top View



Menus:

Direction Buttons—Move through selections, change settings

✕—Decision

●—Cancel decision, return to previous menu

Start- Game start

During Gameplay:

Direction Buttons—Move blocks

Down—Increase speed of blocks

✕—Rotate blocks counter-clockwise

●—Rotate blocks clockwise

Start- Pause and unpauses

The Pause Menu:

While the game is paused, press Select to view the Pause Menu.

- Continue will unpause the game
- Password will show the password for the current stage
- Retire will end your game
- Quit will take you to the title screen

In Edit Mode:

Direction Buttons—Move cursor

✕—Decision, place block

●—Cancel decision, return to previous menu

L1 or R1—Change block color

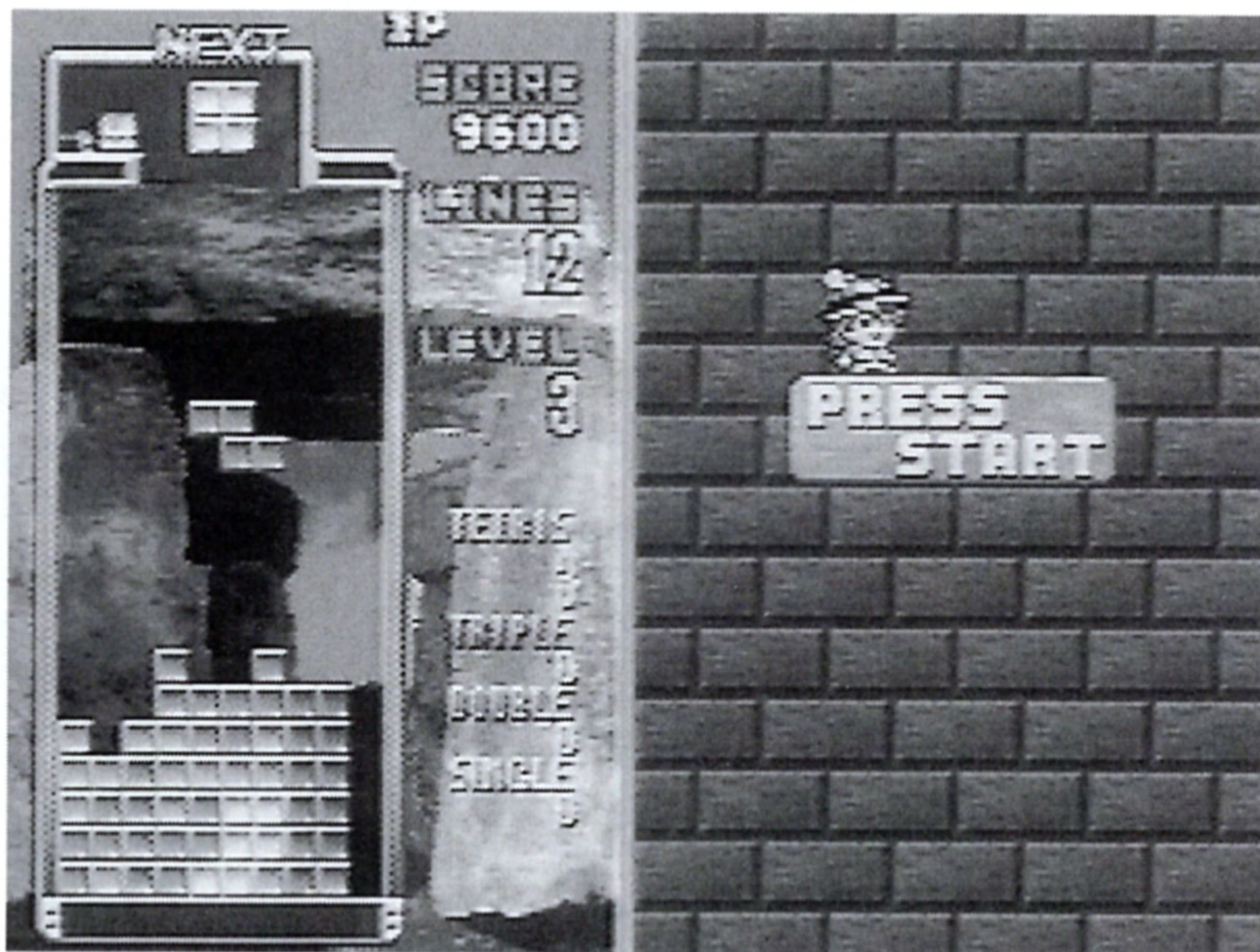
■—Erase block

Soft Reset: During gameplay, holding Select and holding Start for 2 seconds will return you to the title screen.

IT'S TETRIS PLUS A WHOLE LOT MORE!

Tetris Plus is stacked with four modes of play: Classic Tetris, Puzzle, two-player Vs. Puzzle, and a unique Edit mode which allows the player to construct original puzzles.

Classic Tetris

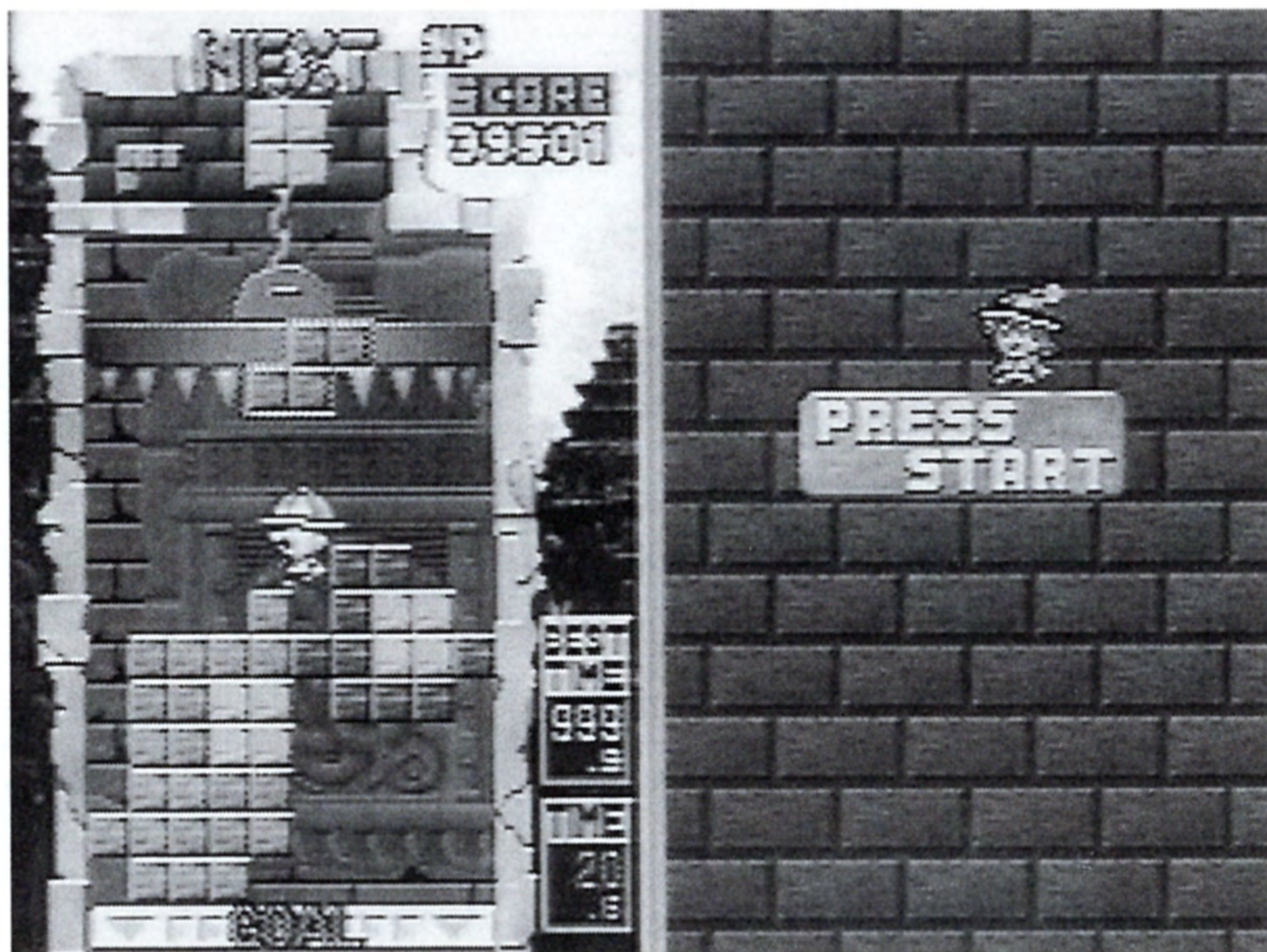


Players of all ages can enjoy the original game conceived by famed Russian inventor, Alexey Pajitnov. To score, try to form a horizontal line of blocks. Each complete line will disappear from the chamber. Bonus points are awarded for clearing two lines, three lines and four lines (a tetris). If the blocks reach the top, the game is over!

Two-Player Non-competitive Play

The unique split-screen in Tetris Plus allows two people to enjoy Tetris in non-competitive play. Player one's board is on the left side of the screen, while player two's board is on the right side of the screen. To begin non-competitive play, press the Start button on the respective controller.

Puzzle Mode



A curious little professor and his lovely assistant are in search of fortune and adventure. A little older, but not quite the wiser, the supposedly intellectual mis-adventurer quickly gets into a heap of trouble. Anxious to impress his loyal assistant, the professor gets trapped inside the chamber of an ancient ruin.

As the chamber fills with blocks tumbling from above, a viciously spiked ceiling ominously descends upon the brave yet often foolish hero. When the blocks begin to pile, the professor tries to climb his way to the top. The chamber is already filled with patterns of blocks, so a path must be cleared in order for the professor to find his way to the treasure hidden below.

The professor's quest will take him across the globe and into the wonders of the labyrinth at Knossos, the Pyramids of Egypt, Angkor Wat, the Mayan ruins, and a mysterious city with an additional 20 stages of death-defying puzzle excitement. That's a total of 100 puzzles; each one more difficult than the last!

Stages and Endings

Each level contains 20 stages. A stage is cleared when the professor reaches the vault hidden below each chamber. After clearing the 20 stages in a level, the player can choose the next site.

Saving Your Progress

When a game is over, a six-block password will appear on screen. If a Memory Card is not available, use this password to save your progress. Remember password saves are limited in the data saved.

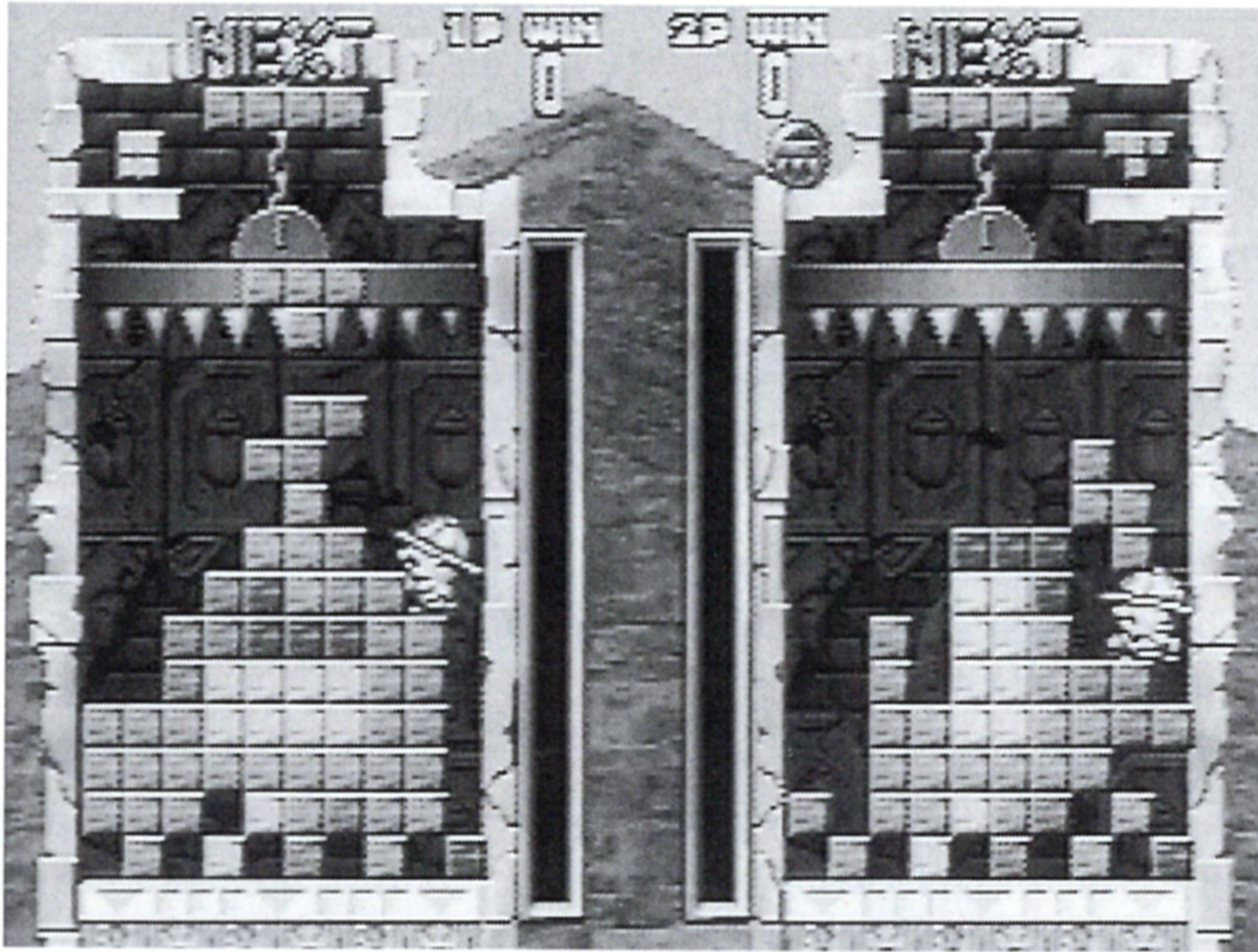
Recalling a Saved Game

If using a password, select Password at the Puzzle Mode menu screen. Otherwise, make sure that the Memory Card (sold separately) with the Tetris Plus data is properly inserted then select Continue.

Two-Player Non-competitive Play

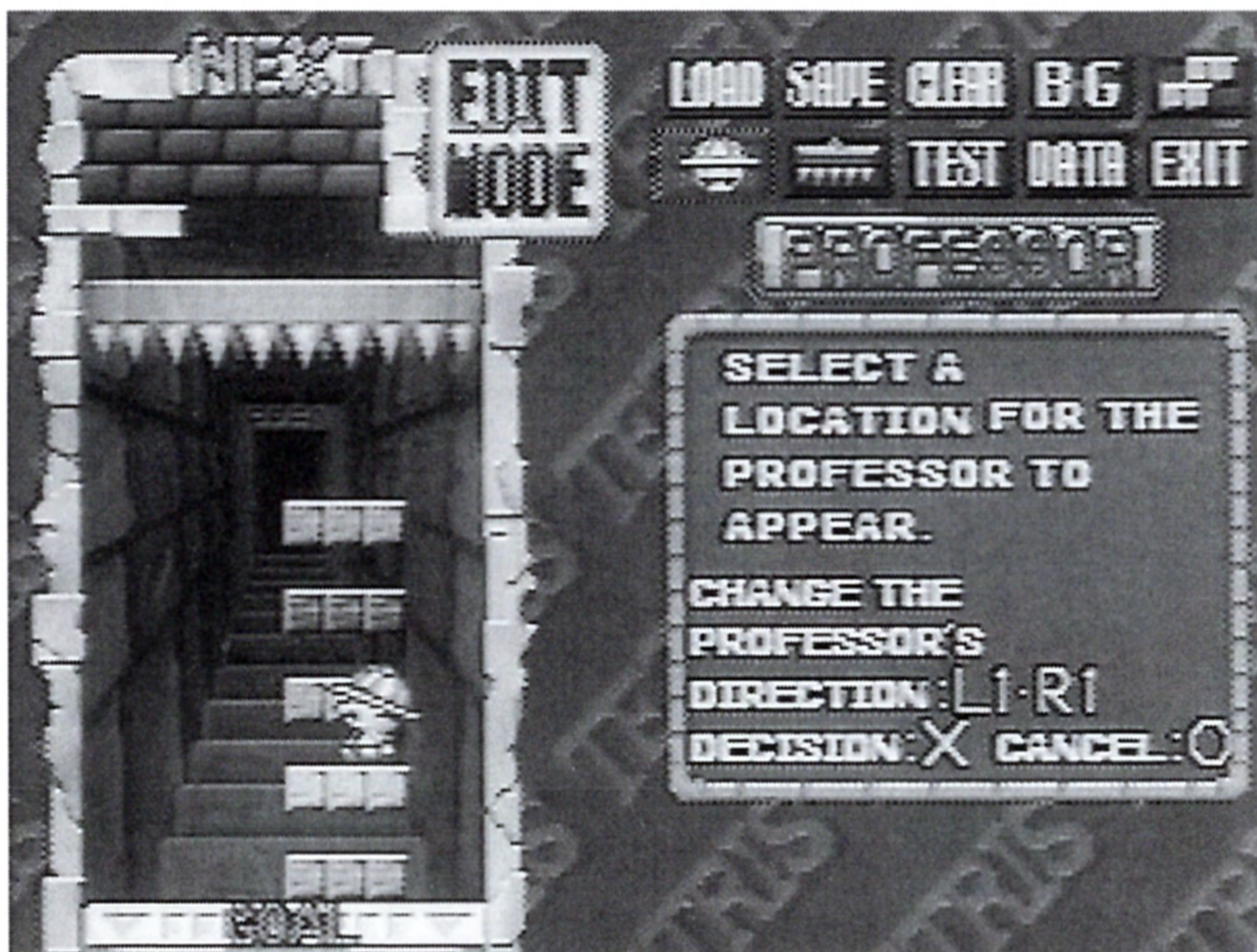
The unique split-screen in Tetris Plus allows two people to enjoy Puzzle mode in non-competitive play. Player one's board is on the left side of the screen, while player two's board is on the right side of the screen. To begin non-competitive play, press the Start button on the respective controller. For competitive play see Two-player Vs. Puzzle mode.

TWO-PLAYER VS. PUZZLE MODE



The two-player Vs. Puzzle mode is a competitive version of the one-player Puzzle mode. Each time a player clears at least two lines of blocks, those lines are sent to the opposing chamber. A player wins by getting the professor to the hidden vault first or if the opposing professor touches the spiked ceiling. At the beginning of each round, players may set a handicap by adjusting the height of the ceiling.

EDIT MODE



This one-player only version of Puzzle mode is played the same way as Puzzle mode, except the player gets to construct and save original puzzles. In Edit mode, the background, blocks, the professor's location of appearance, and the ceiling height can be customized. The on-screen prompts will guide you through the entire construction process.

Editing a Puzzle

In Edit mode, the player can create original puzzles or edit the ten sample stages included with Tetris Plus. To load a previously saved stage, select Load at the Edit screen. Use the Direction Buttons to select the desired puzzle.

Saving Edited Puzzles

To save an edited puzzle, select Save at the Edit screen. Puzzles can be saved to one of ten available stages. Use the Direction Buttons to select a stage for your newly constructed puzzle. Saving puzzles requires the use of a Memory Card (sold separately).

Selecting the Stage Order

Select Data at the Edit screen. Use the Direction Buttons to determine the order of appearance (the order of play) of the puzzles.

Playing Stages Constructed in Edit Mode

To play constructed puzzles, select Play from the Edit Mode Menu.

OPTIONS

Customize game play settings here. Use the Up and Down Direction Buttons to scroll through the options. Use the Left and Right Direction Buttons to change settings.

TETRIS PLUS CREDITS

Jaleco Ltd., Tokyo, Japan

President

Yoshiaki Kanazawa

Managing Director of the Overseas Dept.

Mitsuo Makise

Director

Atsumi Takino

Programmers

Hiroyuki Masada

Ryo Wasaki

Masahiro Iwasa

Daisuke Tanabe

Graphics

Kana Hirano

Nobuyuki Yoshida

Kazuhiko Kawai

Arcade Staff

Game Design

Taro Sasahara

-M-

Graphic Design

Tatsuhiko Suzuki

Director of Consumer Development

Hiroshi Nunokawa

Producer

Toshikazu Iwasa

Graphic Design

Suuichi Kajihara

Masafumi Fujii

Sound

Iku Mizutani

Sinya Kurahasi

Hikaru Tamura

Programmer

Rerorero

Special Thanks

Norifumi Hara

Matsuo Pyonkey
Hiroshi Shigesawa

Sound
NIS
Sawa Kazuo

Jaleco USA, Inc., Wheeling, IL

President
Howie Rubin

Executive Vice-President
Haruo Hori

Vice President-Consumer Division
Greg Hasler

Product Manager
Jarik R. Sikat

Japanese Language Translation
Yukiko Tanaka

Instruction Manual Layout
Lyrka R. Sikat

Sales Administration
Amy Choi Marquez

Package Design
Murrie Lienhart Rysner & Associates

Special Thanks to:
Abby Rubin, Steve Sleigh, Shirley
Vega, Ed Manning, Ida Main, Ralph
Orlowski, Seiichi Ogasawara

JALECO USA, INC. LIMITED WARRANTY

Jaleco USA, Inc. warrants to the original purchaser of this Jaleco software product that the medium on which this computer program is recorded is free from defects in materials and workmanship for a period of ninety (90) days from the date of purchase. This Jaleco software program is sold "as is" without express or implied warranty of any, and Jaleco is not liable for any losses or damages of any kind resulting from use of this program. Jaleco agrees for a period of ninety (90) days to either repair or replace, at its option, free of charge, any Jaleco software product, postage paid, with proof of date of purchase, at its Factory Service Center.

This warranty is not applicable to normal wear and tear. This warranty shall not be applicable and shall be void if the defect in the Jaleco software product has arisen through abuse, unreasonable use, mistreatment, or neglect. THIS WARRANTY IS IN LIEU OF ALL OTHER WARRANTIES AND NO OTHER REPRESENTATIONS OR CLAIMS OF ANY NATURE SHALL BE BINDING ON OR OBLIGATE JALECO. ANY IMPLIED WARRANTIES APPLICABLE TO THIS SOFTWARE PRODUCT, INCLUDING WARRANTIES OF MERCHANTABILITY AND FITNESS FOR PARTICULAR PURPOSE, ARE LIMITED TO THE NINETY (90) DAY PERIOD DESCRIBED ABOVE. IN NO EVENT WILL JALECO BE LIABLE FOR ANY SPECIAL, INCIDENTAL, OR CONSEQUENTIAL DAMAGES RESULTING FROM POSSESSION, USE, OR MALFUNCTION OF THIS JALECO SOFTWARE PRODUCT.

Some states do not allow limitations as to how long an implied warranty lasts and/or exclusions or limitations of incidental or consequential damages so the above limitations and/or exclusions of liability may not apply to you. This warranty gives you specific rights, and you may also have other rights which vary from state to state.

Tetris© 1987 Elorg

Original Concept & Design by Alexey Pajitnov

Tetris Licensed to the Tetris Company and Tetris Plus Sublicensed to Jaleco Ltd.

Tetris Plus ©1996 The Tetris Company

Tetris® & Tetris Plus™ Sublicensed to Jaleco Ltd. by the Tetris Company

All Rights Reserved

Jaleco and the Jaleco logo are trademarks of Jaleco Ltd.

JALECO USA, INC., 685 Chaddick Drive, Wheeling, Illinois 60090

Jaleco USA, Inc. 225 Larkin Drive, Unit 4, Wheeling, IL 60090 Visit Jaleport: <http://www.jaleco.com>
Tetris Plus© 1998 The Tetris Company. Jaleco and the Jaleco logo are trademarks of Jaleco Ltd.

Licensed by Sony Computer Entertainment America for use with the PlayStation game console. PlayStation and the PlayStation logos are trademarks of Sony Computer Entertainment Inc. The ratings icon is a trademark of the Interactive Digital Software Association. Manufactured and printed in the U.S.A. THIS SOFTWARE IS COMPATIBLE WITH GAME CONSOLES WITH THE NTSC U/C DESIGNATION. U.S. AND FOREIGN PATENTS PENDING.



TM

